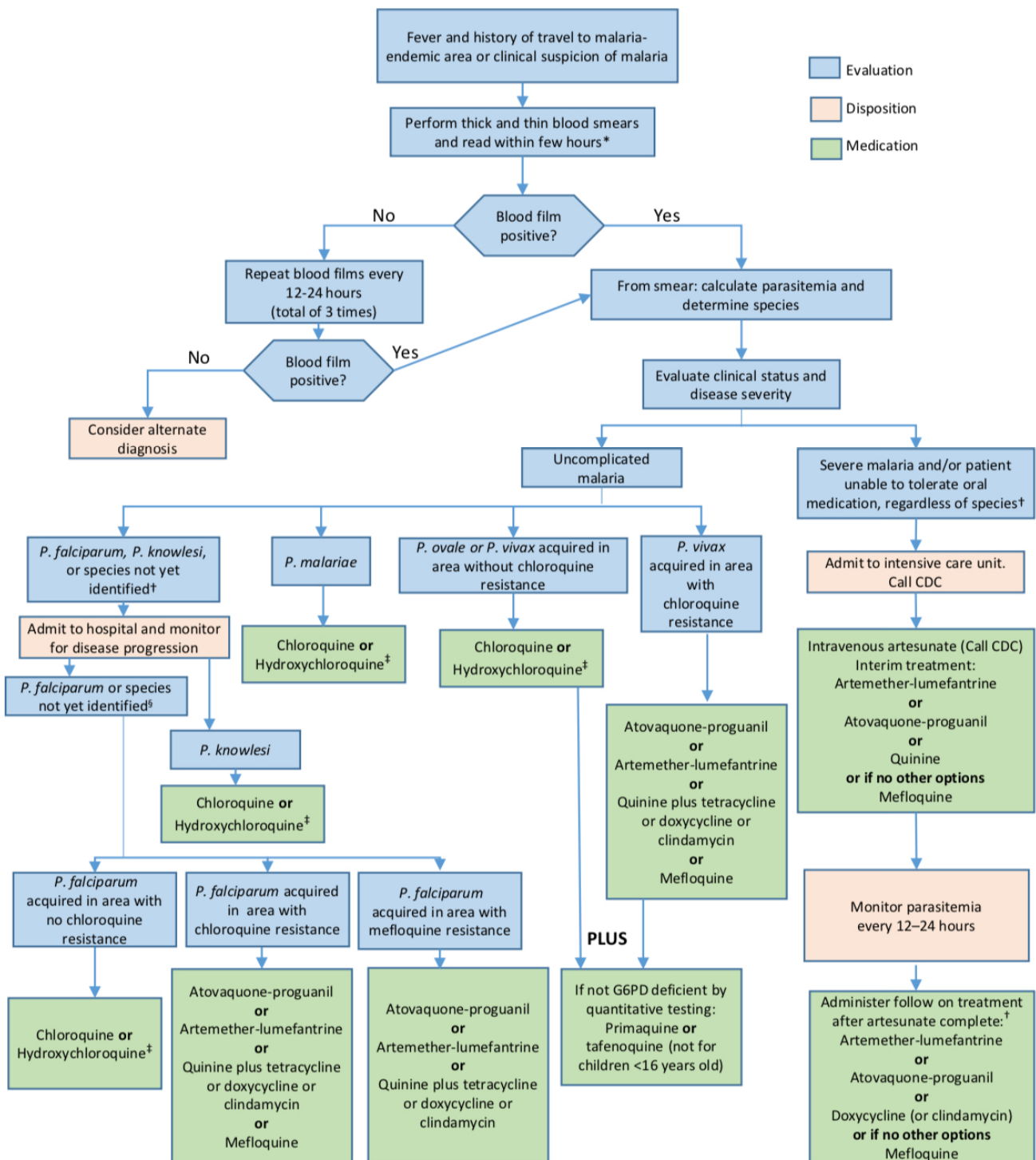


Algorithm for Management of Malaria

**CDC Malaria Hotline: (770) 488-7788 or (855) 856-4713 (toll-free) Monday–Friday 9am–5pm EST
 (770) 488-7100 after hours, weekends, and holidays**



Footnotes

- *If rapid diagnostic test performed, smear should also be performed with results available as soon as possible
- † If species later identified as *P. vivax* or *P. ovale*, add primaquine or tafenoquine if not G6PD deficient by quantitative testing
- ‡Drug options for chloroquine-resistant *P. falciparum* may be used

Every effort has been made to ensure that the information and the drug names and doses quoted in this Journal are correct. However readers are advised to check information and doses before making prescriptions. Unless otherwise stated the doses quoted are for adults.